

State of Wyoming Corner Record

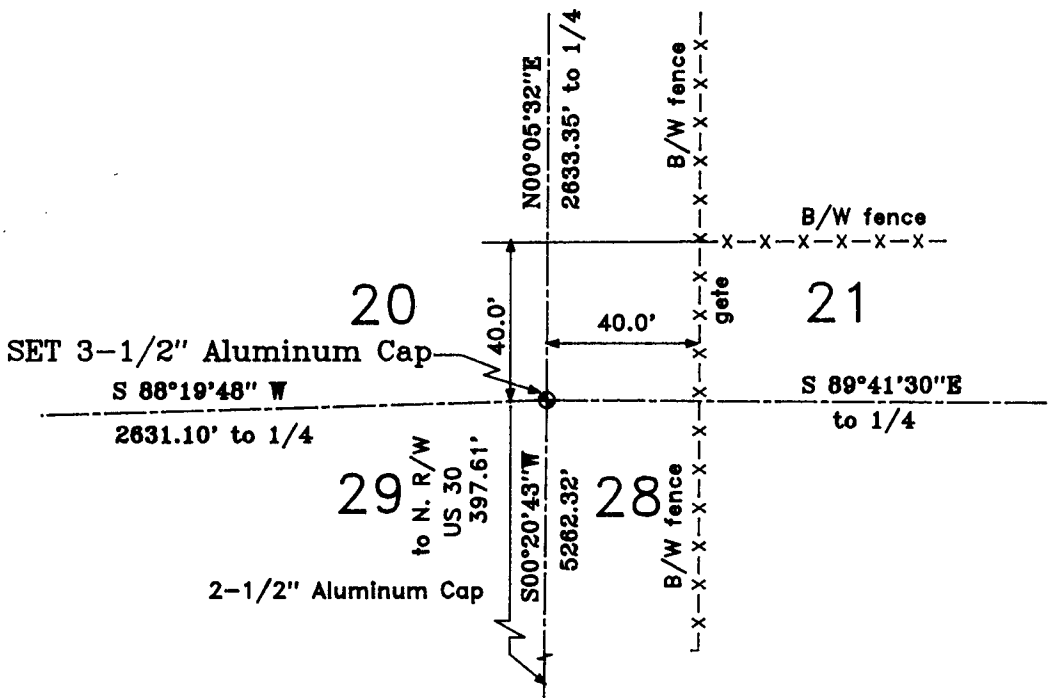
(In compliance with the CORNER PERPETUATION AND FILING ACT, Wyoming Statutes, 1977, Section 36~11~101, et seq., and the Rules and Regulations of the Board of Registration for Professional Engineers and Professional Land Surveyors)

The reverse side of this form may be used if more space is needed.

The Record of the original survey and the citation of the source of the historical information (if the corner is lost or obliterated). The description of the corner monumentation evidence as found and/or the monument and it's accessories as established to perpetuate the location of this corner. A sketch of the relative location of this Monument, accessories, and reference points with the course and distance to adjacent corner (s) (if determined during this Survey). The Method and Rationale used for the reestablishment of lost and obliterated corner.

GLO: Edwin James Deputy Surveyor & Alfred M Rogers under joint contract, 20 May 1871, finished 16 June 1871, Contract No. 15: North between Section 28 & Section 29 (Variation 15.35°E); 40 chains set a Granite stone 15"X8"X5" for 1/4 corner; 80 chains set a GRANITE STONE 16"X7"X6" FOR CORNER TO SECTIONS 20,21,28 & 29. Wyoming State Highway Department, 1963: N00°28'E a distance of 804.3' from C/L East Bound lane I-80, Sta.1021+40 a point on Curve. Previous record: Jeffery B. Jones of Steil Surveying Services; found ship spike 40' West of N-S fence & 40' South of a cross fence to the East.

FOUND: "Ship spike as called for (this "ship spike" was really a 8" long bridge spike, the determination of the type of spike could NOT have been determined with out disturbing said monument). A 5/8"X32" rebar with a 3-1/2" Aluminum Cap was set to perpetuate the location of this corner. Set a steel "T" fence post painted YELLOW as a guard beside this Monument.



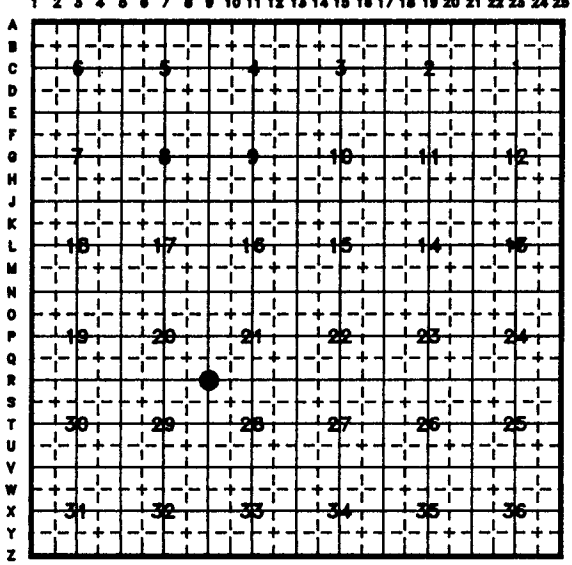
255181

Date of Field Work: JUNE A.D.1999 Office Reference: S20BRKTT (Open Trail Est.) 9030

Cross Index Diagram

Firm/Agency, Address
 Terrestrial Surveying & Mapping Co.
 "Your Friendly Neighborhood Surveyor"
 1127 Terry Ranch Road
 Cheyenne, Wyoming 82007
 Telephone Number: (307) 634~9360

T. 14 N. R. 63 W. 6th P.M.



This Corner Record was prepared by me or under my direction and supervision.

SEAL & SIGNATURE



Corner Name: Sec. Cor. Section: 20, 21 / 29, 28 T. 14 N. R. 63 W. 6th P.M. Cross Index No. R~9